

# Fast Flexible Affordable

## DeltaNu's ExamineR is

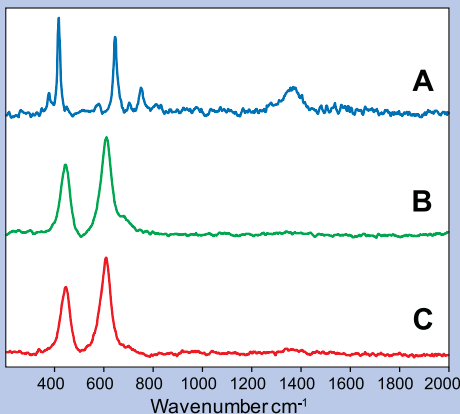
**Fast** sampling. Position the sample and obtain results in seconds or less. Allow our mapping software to automatically analyze multiple locations.

**Flexible** and compact Raman modules at 532, 785 and 1064 nm. Purchase a system or upgrade your microscope with an ExamineR module.

**Affordable** price without sacrificing performance. DeltaNu is the price/performance leader. We invite you to compare.



## 785 nm Raman Spectra of Sample S141B Containing Rutile Inclusions

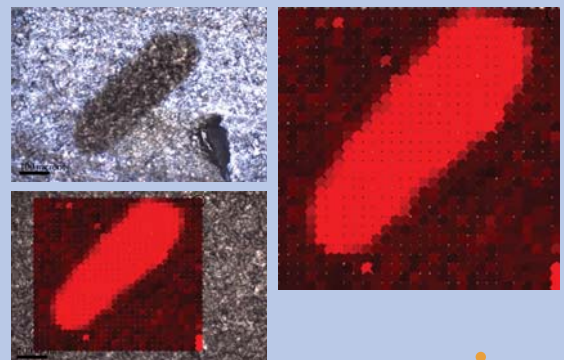


**A:** Spectrum of the sample S141B sapphire containing the inclusions.

**B:** Spectrum of the exposed inclusion in sample S141B. The inclusion was identified as rutile (TiO<sub>2</sub>) by our library search. This was validated against the RUFF Raman library found at <http://ruff.info/rutile/display=default/R050417>.

**C:** Spectrum of the encapsulated inclusion showing it is also rutile.

## Map of a Rutile inclusion in Sapphire



INTEVAC

[www.deltanu.com](http://www.deltanu.com)

Discover the Raman Advantage! **DeltaNu**

